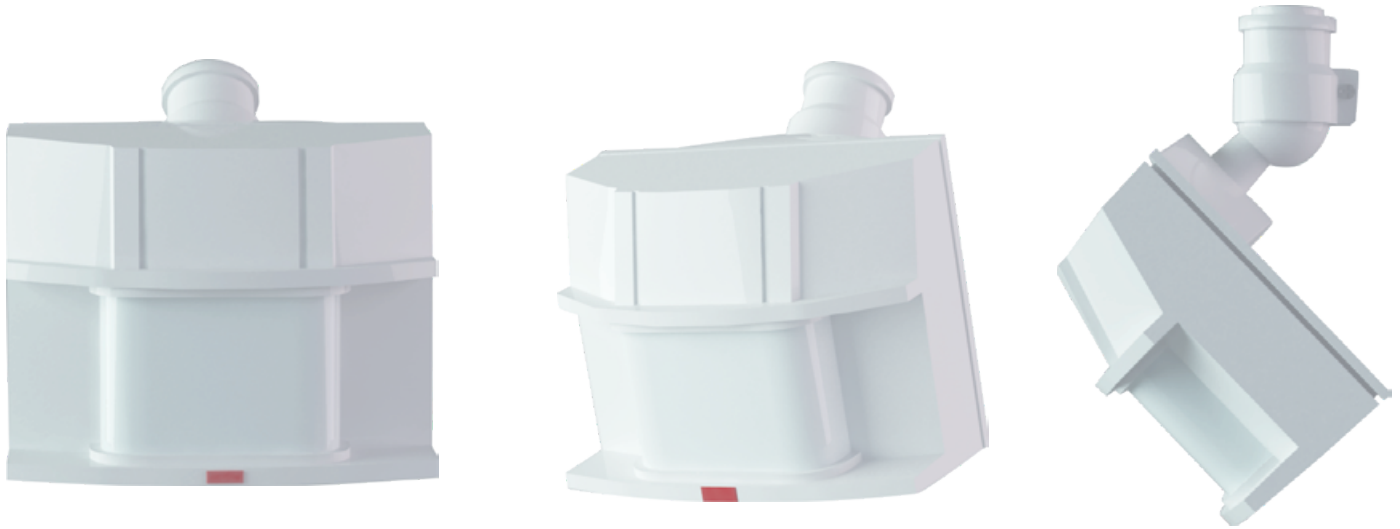


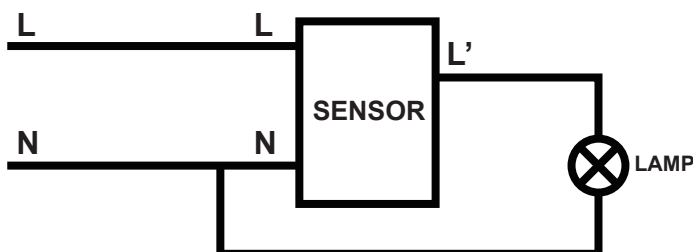
PIR Motion Sensor



Specifications

Input Voltage	AC110-130V
Power Frequency	50/60Hz
Rated Load	MAX.500W resistive load MAX.200W Inductive load
Detection Range	150°
Detection Distance	MAX18m (adjustable)
Time-delay Setting	5sec, 1min. 5min. 10min
Detection Moving Speed	0.6-1.5m/s
Working Temperature	-10℃ --+40℃
Installation Height	1-4m

Connect-wire Diagram



N : WHITE
L : BLACK
L' : RED

Technical Requirement



Working Mode

1. Test Mode
2. Induction Mode
3. Manual Mold

1. Test Mode

If people pass and trigger signal, the lamp will turn on either in day and night when turn to Test Mode and time-delay is 5 seconds.

2. Induction Mode

If people pass and trigger signal, the lamp will only turn on in night when the ambient brightness less than 5LUX and turn off in daytime when turn to position 1min, 5min, 10min and time-delay is 1min/ 5min/10min.

3. Manual Mode

The lamp will keep turning on for 8 hours in night and light off in daytime. It will automatically switch to Induction Mode when the ambient brightness more than 150LUX in daytime.

Testing Way

1. To connect the black wire to the red one, the white wire to the zero one, and then to connect the red wire and white wire to the output load according to connecting-wire diagram.
2. To turn on power, Keep the induction device lighting up for 30-40 seconds and the indicator lamp switch on to off 1-3 times.
3. Working Mode: When turn on power, the infrared motion sensor will enter into corresponding working mode based on ON-TIME switch. The detection distance can be adjusted by RANGE switch, and it means the maximum distance when turn to position MAX and the minimum distance when turn to position MIN. ON-TIME switch can adjust the corresponding working time-delay from 5s to 1 min, 5min and 10min.
4. Manual Mode: To turn on power and preheat 30secnds later , turn off for 1-3seconds when switch it, and then turn on again. Doing in this way for 1-3 times to switch to Manual Mod under the condition that the brightness less than 5LUX and the switch turn to position 1min, 5min,10min.
5. The method to switch from Manual Mode to Induction Mode :
 - a. To turn off the lamp when it lighting up for 8 hours.
 - b. To turn off the lamp when dawn in daytime.
 - c. To turn off the power and then turn it on in one minute.