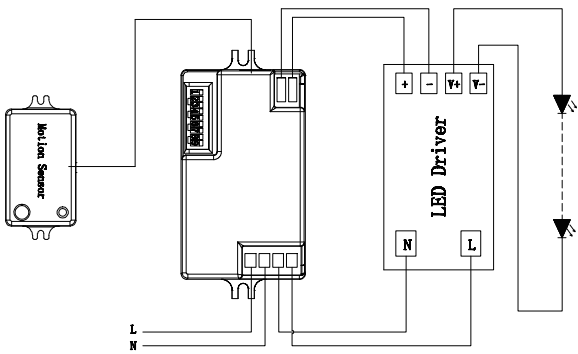
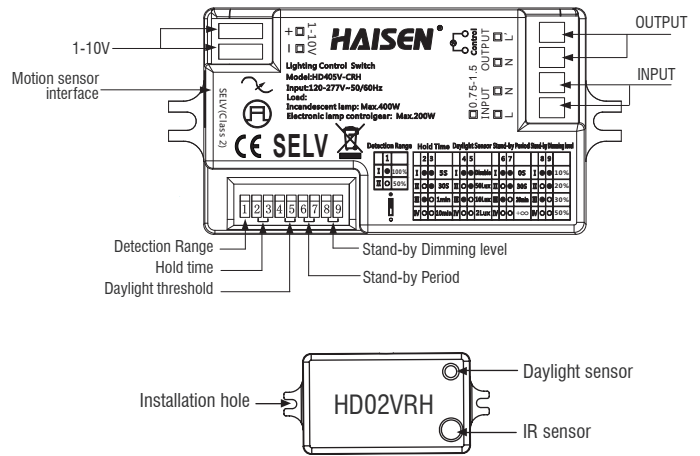


# HD405V-CRH

## Highbay separate antenna dimming sensor



Wiring diagram



On/off control



Stand-by period



Detection area



Stand-by dimming level



Hold-time



Remote control setting

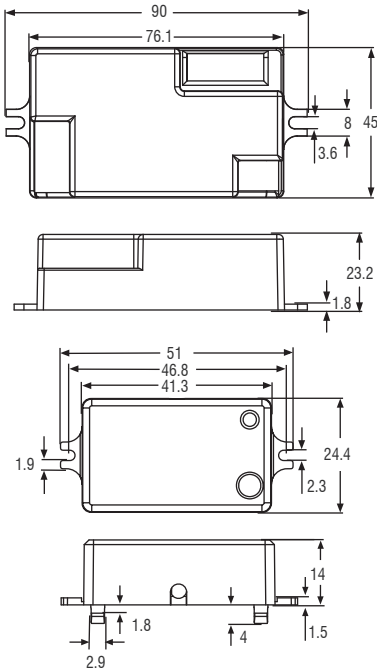


Daylight threshold

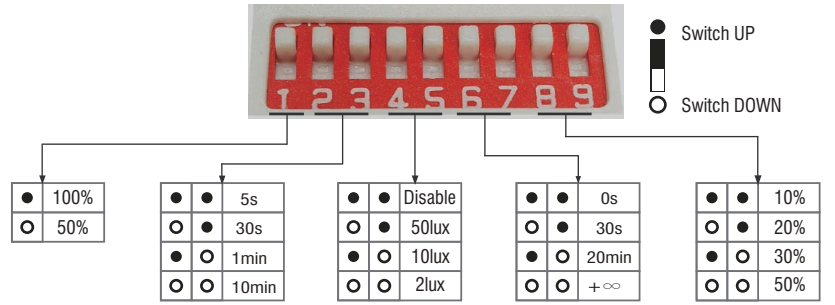
### 01 Technical data

Operating voltage	120~277 VAC 50/60Hz
Switching capacity	Max.200W(Control gear) Max.400W(Incandescent lamp)
Standby power	< 1W
Detection area	50%/100%
Hold-time	5s/30s/1min/10min
Stand-by period	0s/30s/20min/+∞
Stand-by dimming level	10%/20%/30%/50%
Daylight threshold	2Lux/10Lux/50Lux/Disable
Microwave frequency	5.8GHz±75MHz
Microwave power	< 0.3mW
Interfaces	6-pole pluggable clamp terminal (L,N,N,L,-1-10v+,-1-10v-)for 0.75-1.5mm <sup>2</sup> cable
Mounting height	Max.15m(ceiling mounted)
Detection range	Max.12x15m(ceiling mounted) Max.20m(wall mounted)
Operating temperature	-20°C~+55°C
IP rating	IP20
Size	90x45x23.2mm; HD02VRH,51x24.4x14mm
Certificate	cULus listed,FCC

02 Mechanical structure(mm)



03 Settings



Detection area

Detection area means detection coverage. It can be adjusted by combining DIP switches for specific application.

Hold-time

Hold-time means the time period the light will be ON after the last detection.

Daylight threshold

Daylight sensor prior to motion sensor. Set threshold for specific needs. If Disable, only motion sensor works.

Stand-by period

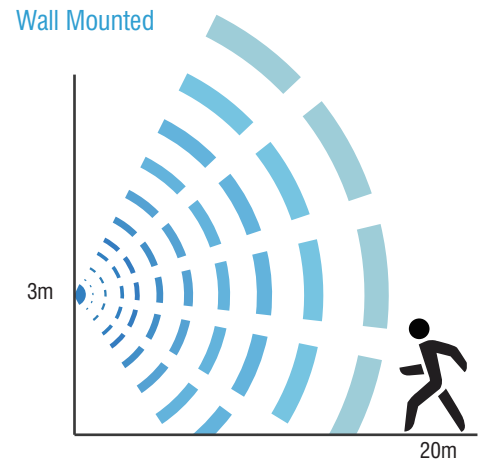
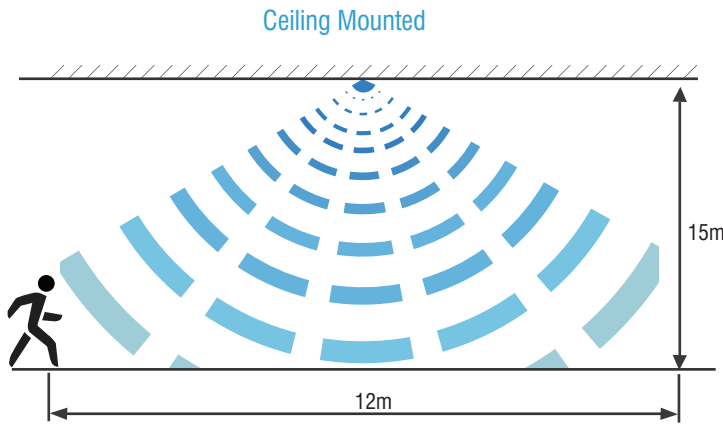
This is the time period the light keeps dimming down after the last detection.

Stand-by dimming level

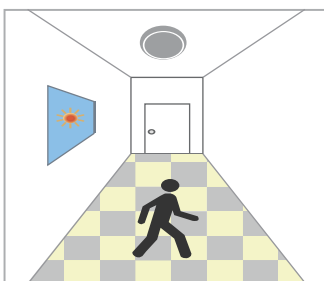
This is the dimming level the light keeps during stand-by period.

Note: Motion sensor setting and dimming setting please refer to remote control HD02R. HD02VRH Standard Version Cable Length 30mm (can be customized).

04 Detection coverage



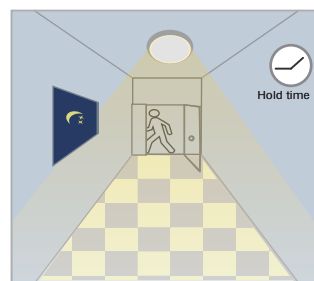
05 Application Function Demo - Dimmable control/Corridor function



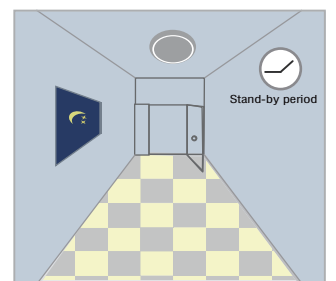
When motion detected, but sufficient daylight, light remains OFF.



When motion detected, insufficient daylight, light ON.



After last detection, the light will be dimmed down to the stand-by dimming level (10%, 20%, 30%, 50%).



After the stand-by period, light OFF.