

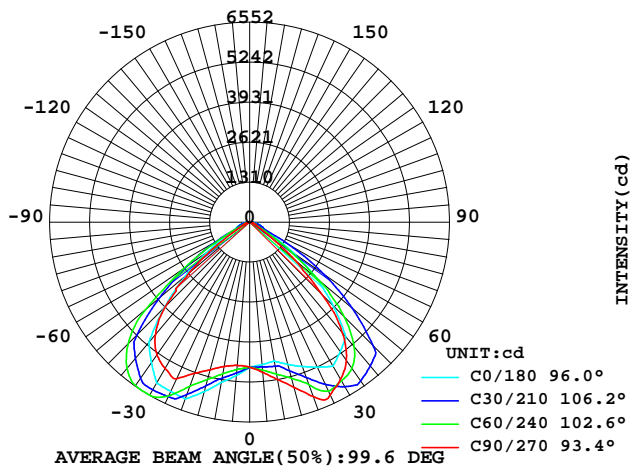
STREETLIGHT PHOTOMETRIC TEST REPORT

Report number:

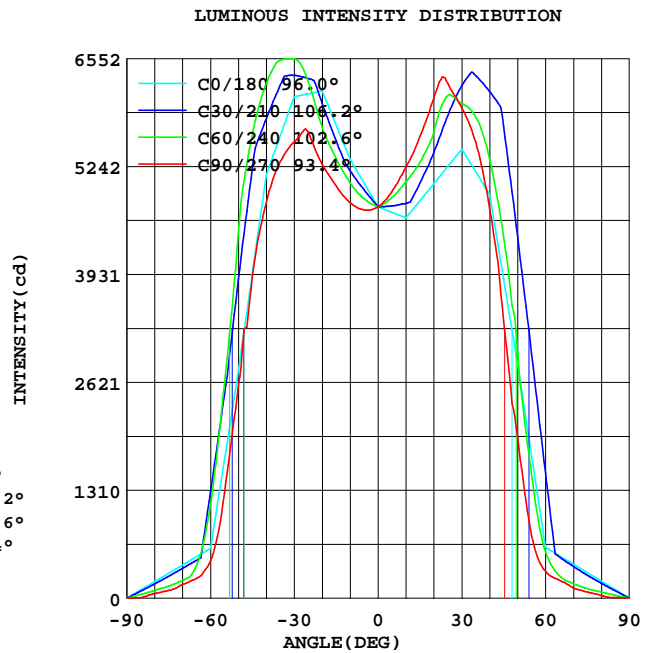
MANUFACTURER: LI TIAN	Address:	
NAME: LTOK-100W	TYPE:	WEIGHT:
SPECIFICATION:	DIMENSION:	SERIAL No.:

MODEL:		Imax(cd):	7451	Effective Flux(lm):	14002.2
NOMINAL POWER(W):	98	MAXIMUM(C, γ):	315, 27.5	EEI	0.094
RATED VOLTAGE(V):	220	EFFICIENCY(%):	100.0	Voltage(V)	219.6
NOMINAL FLUX(lm):	14673.5	η street_up(%):	0.0	Current(A)	0.448
TEST FLUX(lm):	14673	η street_down(%):	49.8	Power(W)	96.68
LAMPS QUANTITY:	1	η house_up(%):	0.0	Power Factor	0.983
TOTAL FLUX(lm):	14673	η house_down(%):	50.2	EFFICIENCY(lm/W)	151.8

INTENSITY DISTRIBUTION DIAGRAM
IN C PLANS



INTENSITY DISTRIBUTION DIAGRAM
IN C PLANS



Test System:HOP00 HPG1900
Temperature:25.3DEG
Operators:
Test Date:2018年11月10日

Test Set: 5.0deg/s B-Beta (TYPE B)
Humidity:65.0%
Test Distance:10.500 m
Remarks:

Color Temperature Data List

Report number:

MANUFACTURER: LI TIAN	Address:	
NAME: L TOK-100W	TYPE:	WEIGHT:
SPECIFICATION:	DIMENSION:	SERIAL No.:

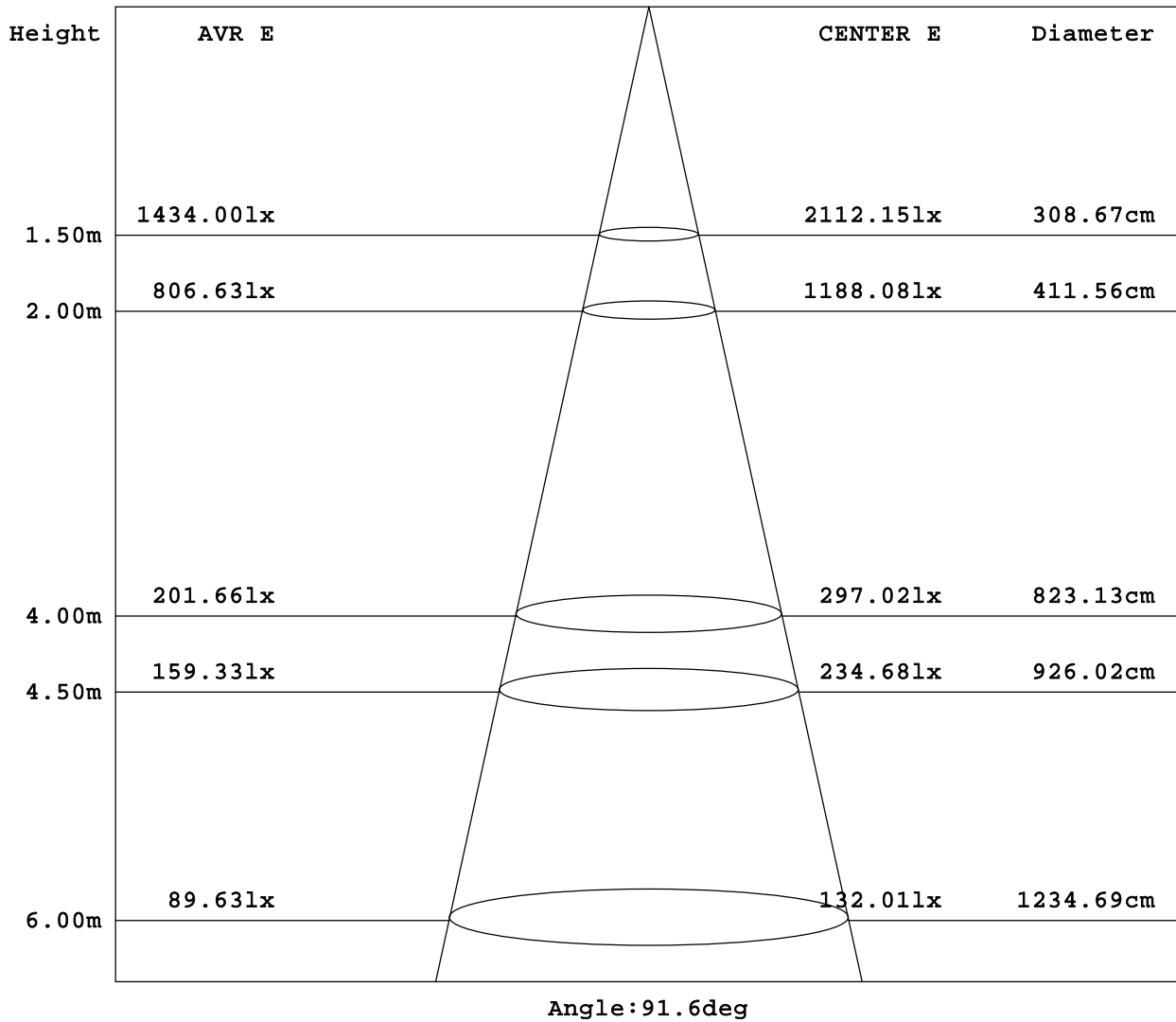
Test System:HOP00 HPG1900
Temperature:25.3DEG
Operators:
Test Date:2018年11月10日

Test Set: 5.0deg/s B-Beta (TYPE B)
Humidity:65.0%
Test Distance:10.500 m
Remarks:

AVERAGE AND CENTER E Figure

Report number:

MANUFACTURER: LI TIAN	Address:	
NAME: LTOK-100W	TYPE:	WEIGHT:
SPECIFICATION:	DIMENSION:	SERIAL No.:



Test System: HOP00 HPG1900
 Temperature: 25.3DEG
 Operators:
 Test Date: 2018年11月10日

Test Set: 5.0deg/s B-Beta (TYPE B)
 Humidity: 65.0%
 Test Distance: 10.500 m
 Remarks:

ZONAL FLUX DIAGRAM

Report number:

MANUFACTURER: LI TIAN	Address:	
NAME: LTOK-100W	TYPE:	WEIGHT:
SPECIFICATION:	DIMENSION:	SERIAL No.:

γ	C0	C45	C90	C135	C180	C225	C270	C315	γ	zone	total
5.0	5041	4908	4714	4668	4685	4815	4936	5082	0- 5	115.2	115.2
10.0	5330	5124	4804	4650	4618	4926	5236	5483	5- 10	354.1	469.3
15.0	5745	5441	5007	4747	4825	5116	5604	5970	10- 15	614.0	1083
20.0	6160	5933	5268	5070	5033	5623	6077	6637	15- 20	911.5	1995
25.0	6125	6532	5663	5512	5243	6215	6248	7283	20- 25	1243	3238
30.0	6090	6810	5540	5919	5453	6326	5954	7297	25- 30	1551	4790
35.0	5616	6657	5302	6011	5178	6346	5534	7051	30- 35	1789	6579
40.0	5142	6508	4809	6067	4903	6203	4727	6725	35- 40	1932	8511
45.0	3951	5863	3911	5618	3871	5473	3361	5811	40- 45	1924	10434
50.0	2759	4997	2576	4934	2840	4455	1944	4663	45- 50	1658	12093
55.0	1682	3155	1277	3164	1730	2609	758.4	2726	50- 55	1189	13281
60.0	606.1	1423	454.4	1489	619.1	1107	327.0	1079	55- 60	657.8	13939
65.0	505.3	637.6	241.4	622.9	516.2	461.3	221.0	487.7	60- 65	287.8	14227
70.0	404.6	260.8	167.5	244.2	413.4	208.6	124.1	237.0	65- 70	168.6	14396
75.0	303.8	188.4	96.46	174.1	310.5	149.6	76.29	175.2	70- 75	123.9	14520
80.0	203.0	122.2	55.01	111.2	207.6	97.75	34.06	114.4	75- 80	86.45	14606
85.0	102.3	60.89	6.725	54.96	104.7	49.21	8.158	57.01	80- 85	50.46	14656
90.0	1.543	1.323	3.528	1.543	1.874	1.874	6.615	1.653	85- 90	16.95	14673
95.0									90- 95		
100.0									95-100		
105.0									100-105		
110.0									105-110		
115.0									110-115		
120.0									115-120		
125.0									120-125		
130.0									125-130		
135.0									130-135		
140.0									135-140		
145.0									140-145		
150.0									145-150		
155.0									150-155		
160.0									155-160		
165.0									160-165		
170.0									165-170		
175.0									170-175		
180.0									175-180		
DEG	LUMINOUS INTENSITY:cd									UNIT:lm	

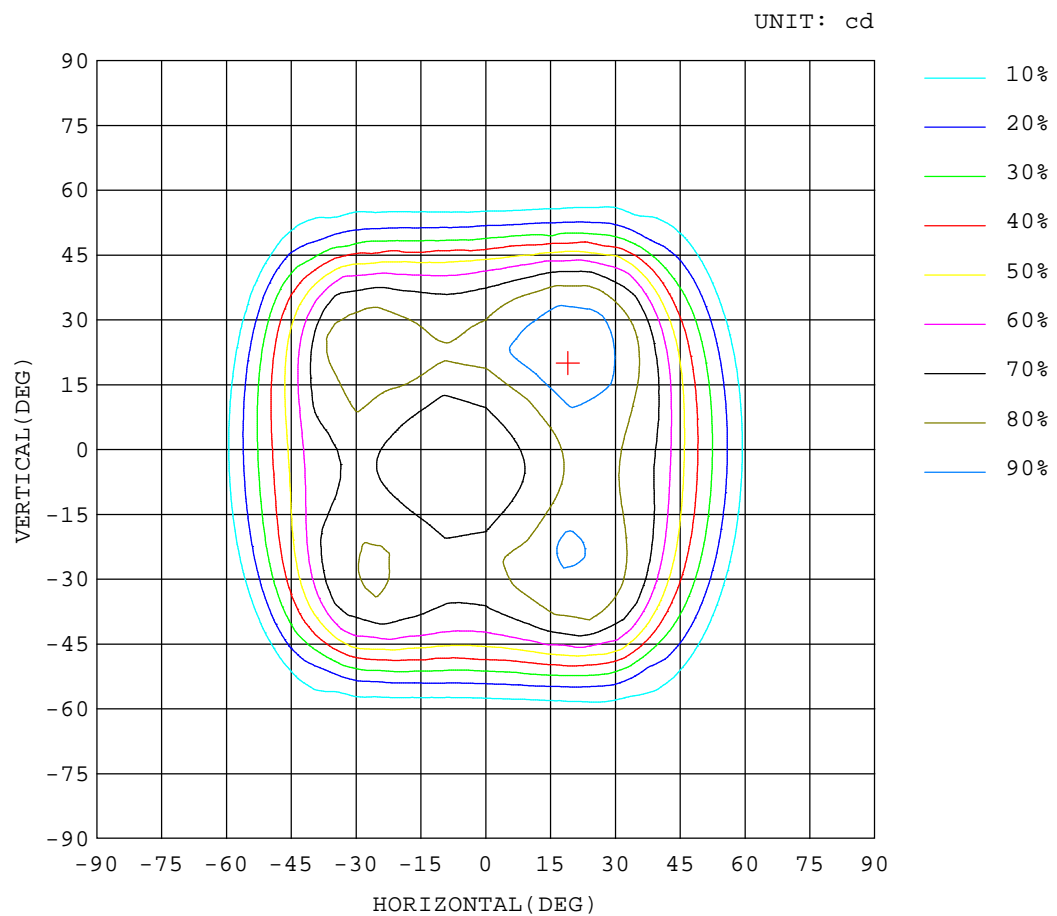
Test System:HOP00 HPG1900
 Temperature:25.3DEG
 Operators:
 Test Date:2018年11月10日

Test Set: 5.0deg/s B-Beta (TYPE B)
 Humidity:65.0%
 Test Distance:10.500 m
 Remarks:

ISOCANDELA DIAGRAM

Report number:

MANUFACTURER: LI TIAN	Address:	
NAME: LTOK-100W	TYPE:	WEIGHT:
SPECIFICATION:	DIMENSION:	SERIAL No.:



Test System:HOP00 HPG1900
Temperature:25.3DEG
Operators:
Test Date:2018年11月10日

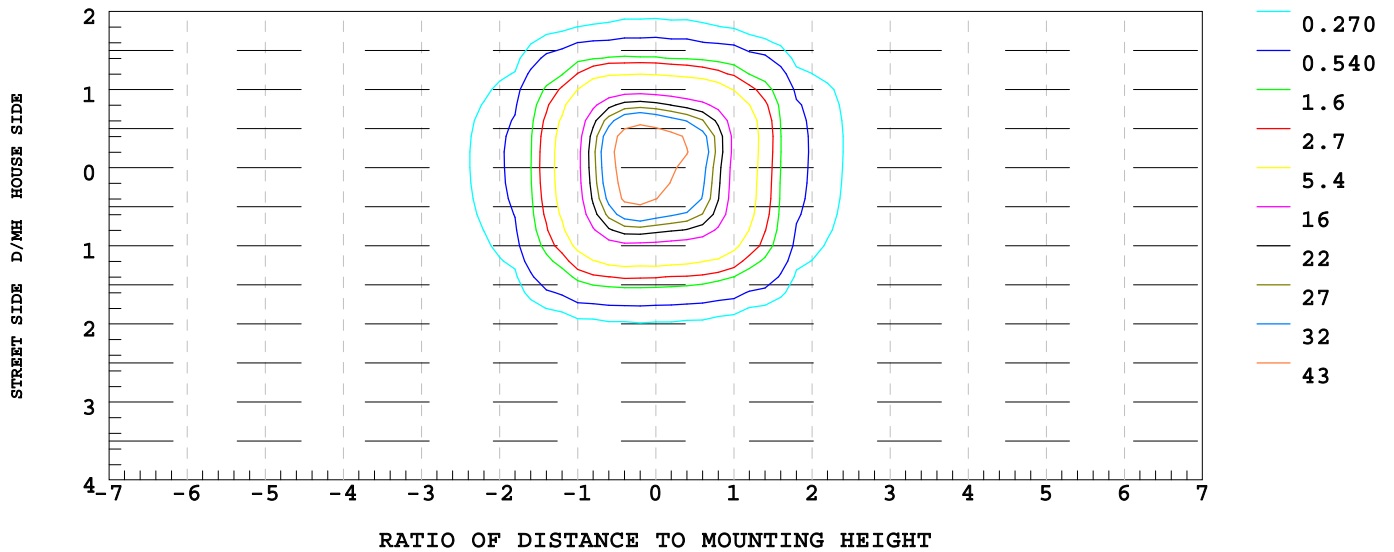
Test Set: 5.0deg/s B-Beta (TYPE B)
Humidity:65.0%
Test Distance:10.500 m
Remarks:

ISOLUX DIAGRAM

Report number:

MANUFACTURER: LI TIAN	Address:	
NAME: LTOK-100W	TYPE:	WEIGHT:
SPECIFICATION:	DIMENSION:	SERIAL No.:

ILLUMINANCE AT MH=10 m,Enadir = 47.52 lx



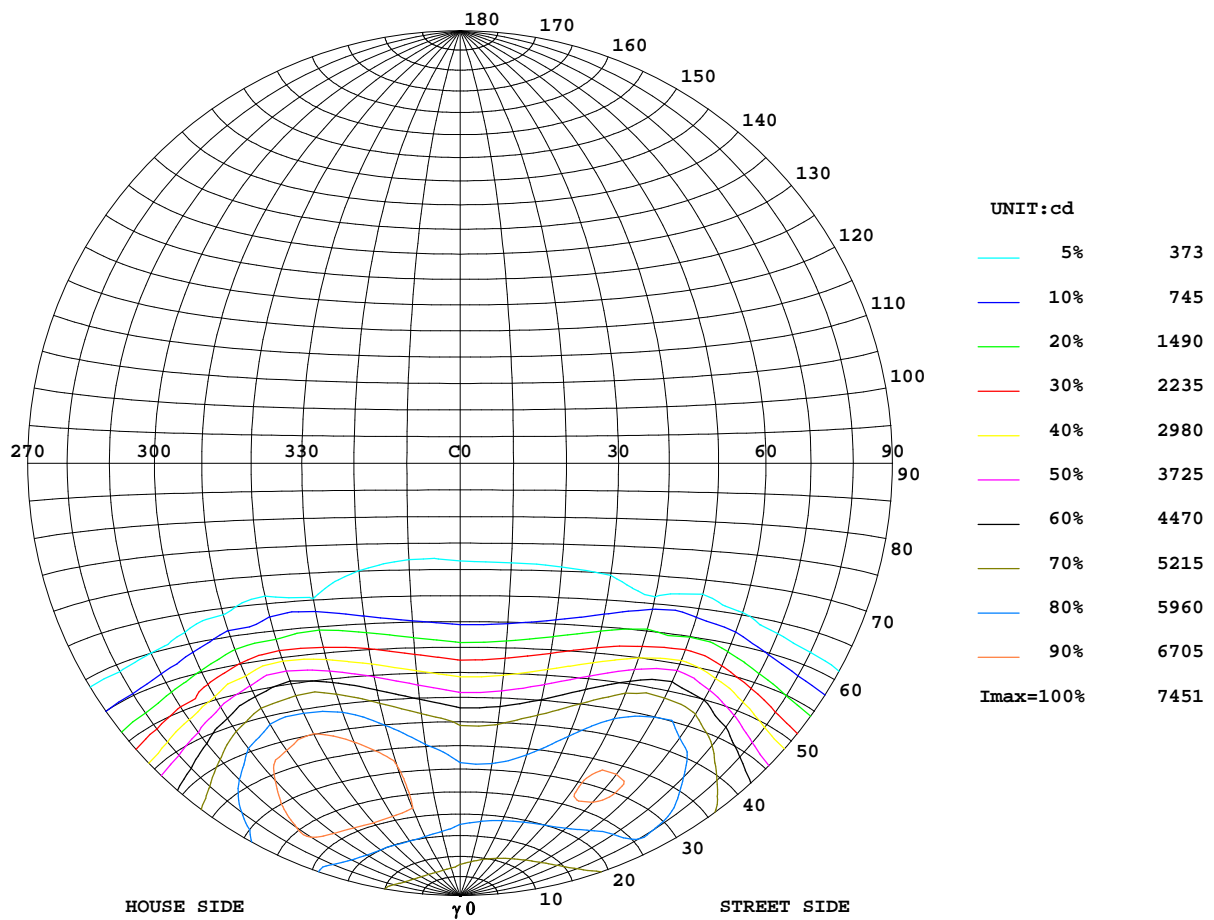
Test System:HOP00 HPG1900
Temperature:25.3DEG
Operators:
Test Date:2018年11月10日

Test Set: 5.0deg/s B-Beta (TYPE B)
Humidity:65.0%
Test Distance:10.500 m
Remarks:

ISOCANDELA DIAGRAM

Report number:

MANUFACTURER: LI TIAN	Address:	
NAME: LTOK-100W	TYPE:	WEIGHT:
SPECIFICATION:	DIMENSION:	SERIAL No.:



Test System:HOP00 HPG1900
Temperature:25.3DEG
Operators:
Test Date:2018年11月10日

Test Set: 5.0deg/s B-Beta (TYPE B)
Humidity:65.0%
Test Distance:10.500 m
Remarks:

Uncorrected UGR Table

Report number:

MANUFACTURER: LI TIAN						Address:				
NAME: LTOK-100W						TYPE:			WEIGHT:	
SPECIFICATION:						DIMENSION:			SERIAL No.:	
ceiling/cavity	0.7	0.7	0.5	0.5	0.3	0.7	0.7	0.5	0.5	0.3
walls	0.5	0.3	0.5	0.3	0.3	0.5	0.3	0.5	0.3	0.3
working plane	0.2	0.2	0.2	0.2	0.2	0.2	0.2	0.2	0.2	0.2
Room dimensions	Viewed crosswise					Viewed endwise				
x = 2H y = 2H	25.3	26.7	25.6	26.9	27.1	25.4	26.7	25.6	26.9	27.1
3H	25.4	26.6	25.6	26.8	27.0	25.2	26.4	25.5	26.7	26.9
4H	25.4	26.6	25.7	26.8	27.0	25.1	26.3	25.4	26.5	26.8
6H	25.4	26.5	25.8	26.8	27.0	25.1	26.1	25.4	26.4	26.7
8H	25.5	26.5	25.8	26.8	27.0	25.0	26.1	25.3	26.3	26.6
12H	25.5	26.5	25.8	26.7	27.0	25.0	26.0	25.3	26.2	26.5
4H 2H	25.4	26.6	25.7	26.8	27.0	25.4	26.6	25.7	26.8	27.0
3H	25.5	26.5	25.8	26.8	27.0	25.3	26.3	25.6	26.6	26.9
4H	25.6	26.5	25.9	26.8	27.1	25.2	26.1	25.6	26.4	26.8
6H	25.7	26.5	26.1	26.8	27.2	25.2	25.9	25.6	26.3	26.6
8H	25.8	26.5	26.2	26.8	27.2	25.1	25.9	25.5	26.2	26.6
12H	25.8	26.5	26.2	26.8	27.2	25.1	25.7	25.5	26.1	26.5
8H 4H	25.5	26.2	25.9	26.6	27.0	25.1	25.9	25.6	26.2	26.6
6H	25.7	26.3	26.1	26.7	27.1	25.1	25.7	25.5	26.1	26.5
8H	25.8	26.3	26.2	26.7	27.2	25.1	25.6	25.5	26.0	26.5
12H	25.9	26.3	26.4	26.8	27.2	25.1	25.5	25.5	25.9	26.4
12H 4H	25.5	26.1	25.9	26.5	26.9	25.1	25.8	25.5	26.2	26.6
6H	25.7	26.2	26.1	26.6	27.0	25.1	25.6	25.5	26.0	26.5
8H	25.8	26.2	26.2	26.7	27.1	25.1	25.5	25.6	26.0	26.4
Variations with the observer position at spacings:										
S = 1.0H	+ 1.4 / - 1.7					+ 2.3 / - 3.2				
1.5H	+ 1.3 / - 1.6					+ 1.8 / - 2.6				
2.0H	+ 2.3 / - 4.4					+ 3.3 / - 7.4				

CIE Pub.117 Corrected 14673 lm Total Lamp Luminous Flux.(8log(F/F0) = 9.3)

Test System:HOP00 HPG1900
 Temperature:25.3DEG
 Operators:
 Test Date:2018年11月10日

Test Set: 5.0deg/s B-Beta (TYPE B)
 Humidity:65.0%
 Test Distance:10.500 m
 Remarks: