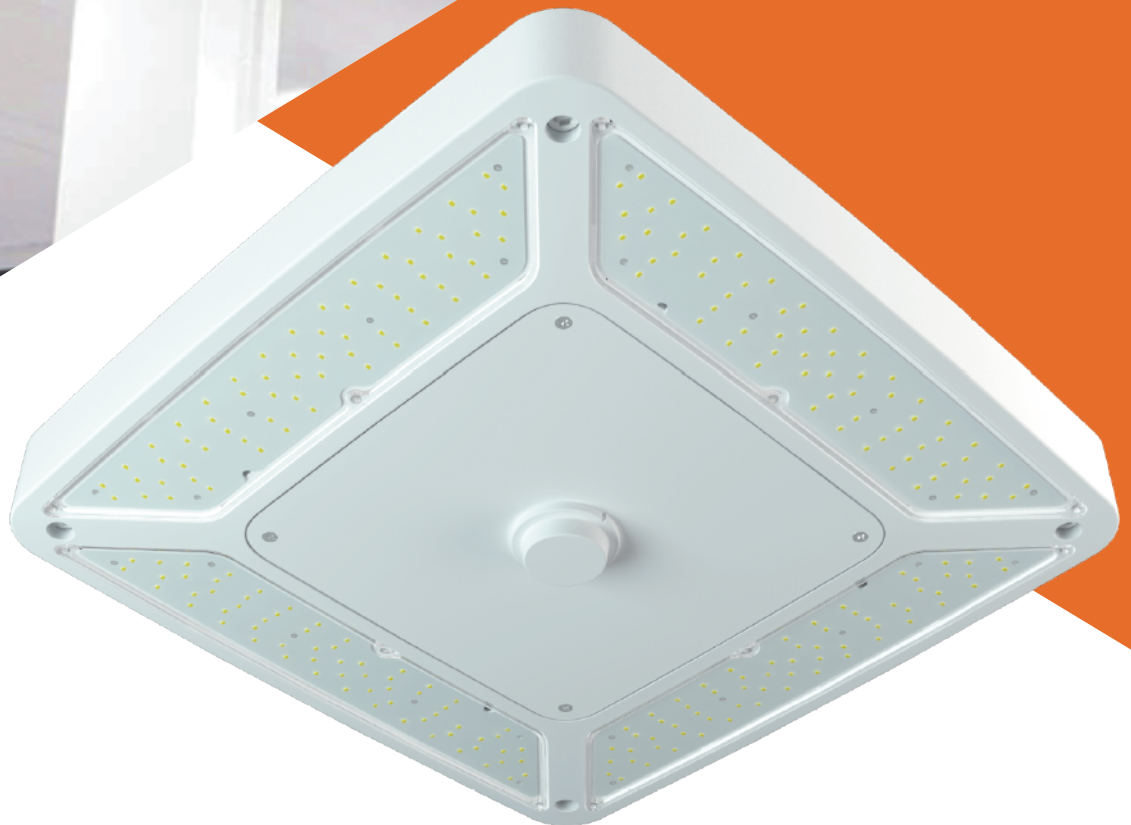




LI-TIAN LIGHTING



## LED Canopy Lighting

---

- Best-in-class energy efficiency
- Many output levels
- Wireless controls
- Virtually maintenance free
- Innovative retrofit options to replace out-dated fixtures
- Comfortable, safe lighting
- Smart styling complements facility
- Motion control available

# The Best-Performing Canopy Luminaire Available

Distributions: Symmetric

Shatterproof, non-yellowing, Polycarbonate Optics

Simple Installation

Advanced Controls

Low Profile, Advanced Design

4 Lumen packages: 10.5K, 13K, 19.5K, 26K

Ease of Ordering Retrofit Accessories

Wide Range of Retrofit Solutions



## DELIVERED LUMENS

Lumens	4000K		5000K		Wattage
	Delivered Lumens	Efficacy(LPW)	Delivered Lumens	Efficacy(LPW)	
10.5L	10500	140	10503	140	75W
13L	13000	130	13005	130	100W
19.5L	19500	130	19508	130	150W
26L	26000	130	26005	130	200W

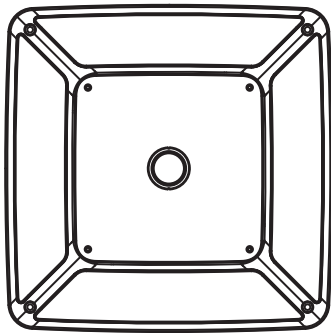


Polycarbonate Optics



Design Adaptability for New Technology and Controls

# Next Generation Canopy Technology



## Driver Accessible Center Panel

Accessible from below the canopy, the center panel allows for growth as new technologies progress. There is plenty of room inside the center cavity for wireless control modules. The center panel accommodates motion and light sensors and other hardware.

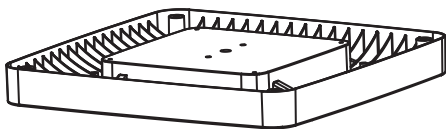
## Elegant Architectural Design

Low profile, subtle and sophisticated styling compliments any environment yet durable enough to handle the harsh atmosphere of petroleum locations.

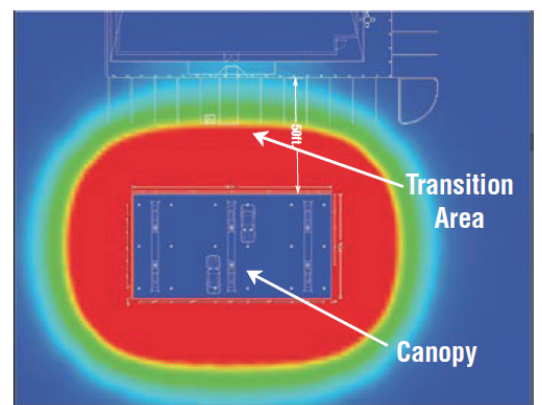
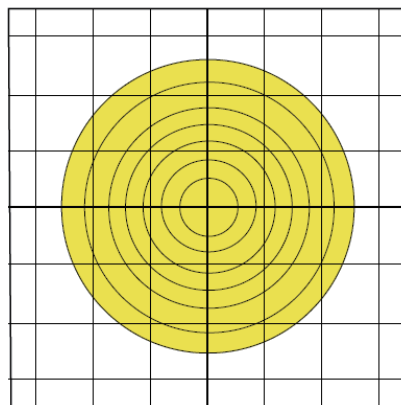
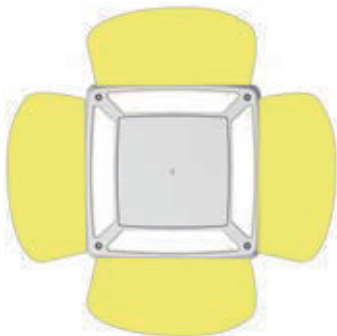


## A Fixture That Breathes

Designed to allow air to pass through the fixture not only helps it perform better, but also regulates the fixture as it heats and cools. Other fixtures may have seals and gaskets that can crack due to repetitive contraction and expansion as the fixture heats up and cools down.

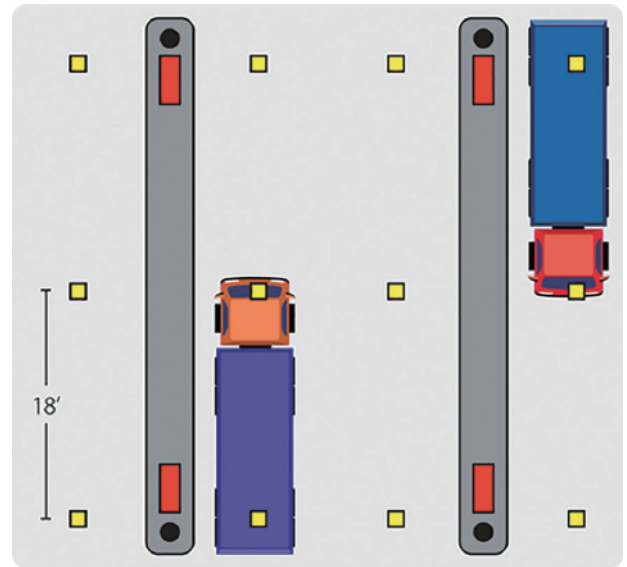
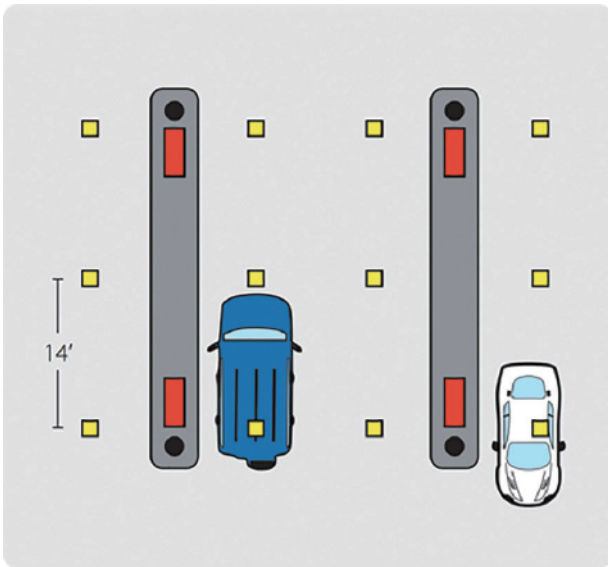


# Standard Symmetric Light Distribution



## Symmetric Canopy Distribution

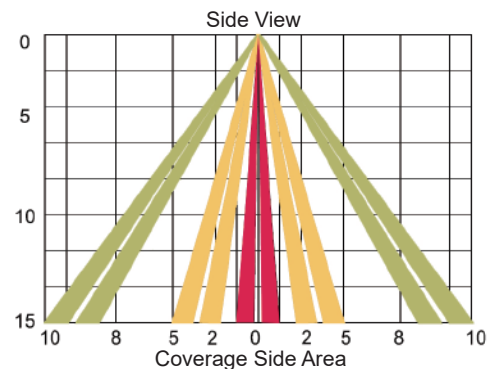
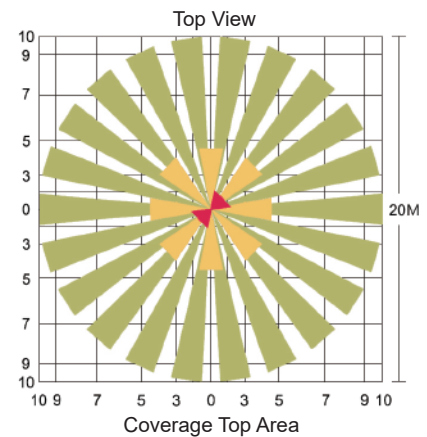
Shatterproof, Non-Yellowing, Self-Sealing Gasket, Much Lighter than Glass, Better Light Transmission.



### Typical fuel station layouts.

Luminaire spacing criterion is 1:1 based on canopy height in driving lanes. Average Illumination is 10-20 fc.

## Wireless Control Options



### Occupancy Sensor / Daylight Sensor (IMS)

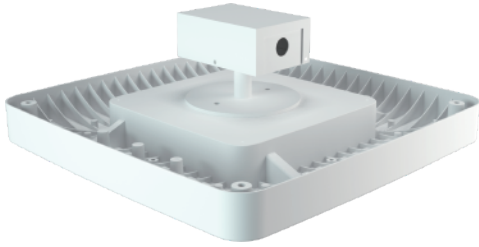
Optional integral IP66 rated radar sensor and daylight sensor activates switching of luminaire light levels. Standard Factory settings: High level light is activated and increased to full bright upon detection of motion. Low light level is activated when target zone is absent of motion activity for ~5 minutes. See coverage diagram for detection cone. Optional configurator tool allows for easy and safe programming of each luminaire from the ground level.

Recommended Mounting Height 0-50 feet.

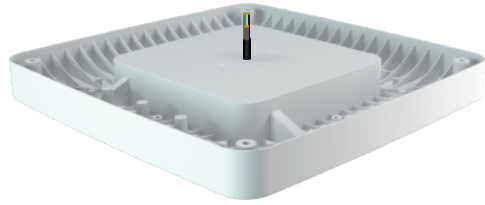
# Installation & Maintenance Recommended Accessories



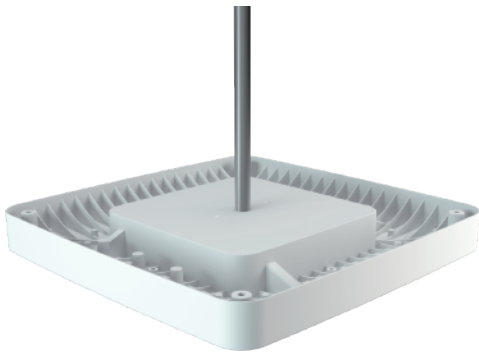
## Mounting Types(standard) Simple Install



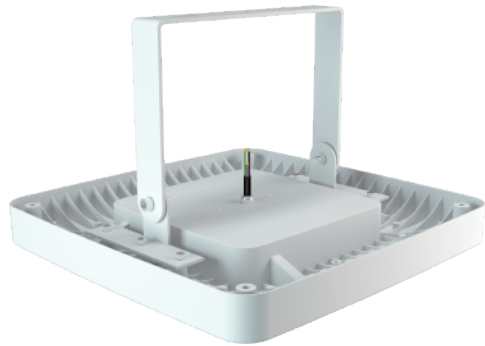
Junction Box Kit



Surface Mount

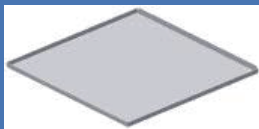


Pendant Mount



U Bracket mounting

Now, all retrofit kits are shipped separately as accessories. This allows you to stock up on the fixtures you need and simply order the retrofit kits according to the specific project demands.



### Beauty Plates

A wide selection with and without holes for 12" and 16" canopy decks.



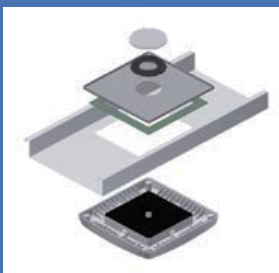
### Junction Box Kit

Enables installation in openings from 4" to 6.5" in diameter. [Includes J-Box and stem]

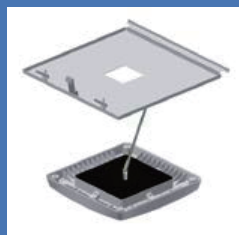


### Conduit stem

Helpful when using an existing junction box. [Includes stem and conduit nuts]



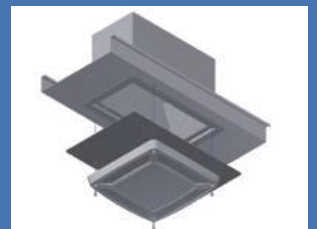
For 16" and 12" Deck Panels with larger openings [Includes all necessary plates and hardware]



**UNV Universal 2x2**  
[Includes all required plates and hardware]



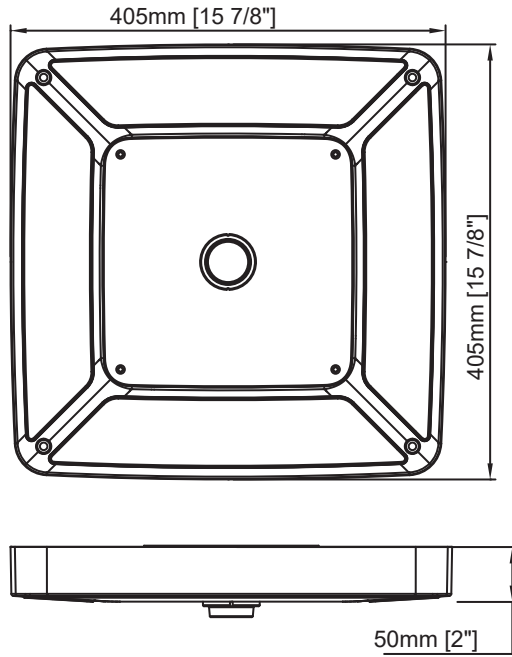
**RECU Richmond**  
[Includes all required plates and hardware]



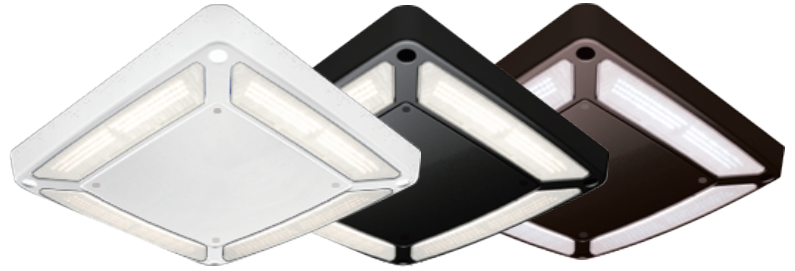
**Surface Mount Box**  
[Includes box and required hardware]



# Dimensions Available finishes



The lighting is offered in three standard powder coated finishes to blend seamlessly with your environment. Check with factory for custom finishes.



White



Black



Bronze

# Ordering information

Example: LTC-75W-50K-UNV-MSP-JK

Lumens	power	Color Temperature	Distribution	Voltage	Options			
					Motion sensing	Mounting	Dimming controls	Finish
140LM/W	75W	WW-30K	Standard Symmetric Light Distribution	UNV	NONE=No Motion sensing	JK=Junction Box Kit	1-10V Dimming	Black White Bronze
130LM/W	100W	Warm White 3000K (70 CRI)		Universal 120-277V				
130LM/W	150W	NW-40K Neutral White 4000K (70 CRI)		HVU	MSP=Integrated Sensor for ON/OFF Operation, 8' - 50' Mounting Height	PM=Pendant Mount SM=Surface Mount UBM=U Bracket mounting	Resistor Dimming Pwm Three-in-one Dimming (standard)	
130LM/W	200W	CW-50K Cool White 5000K (70 CRI)	Universal 347-480V					

# Take the next step

See how Litian LED luminaires can provide a complete solution for your area lighting needs. Visit [www.ilitianled.com](http://www.ilitianled.com) more information.